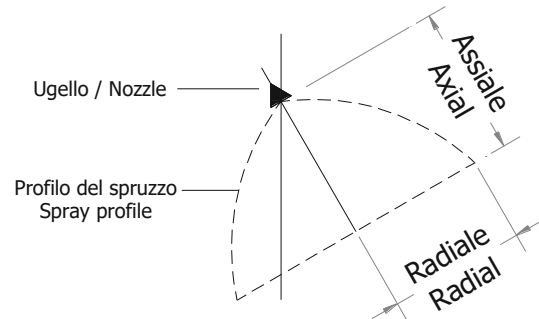
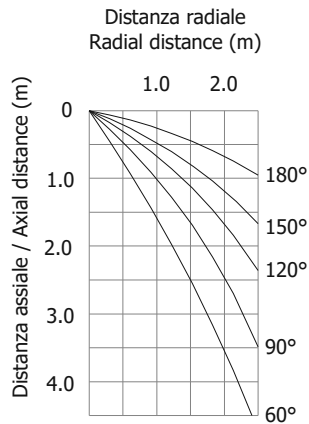
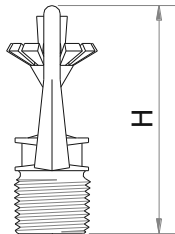
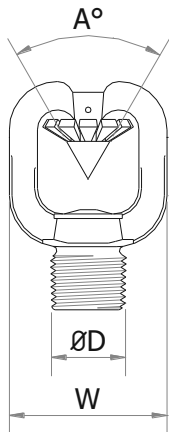


Model

**ROY**

# Ugello Spray Spray Nozzle



## Prestazioni / Performance

Modello Model	ØD GAS-BSP M	W	H	A° Angolo di Spruzzo Spray Angle	Fattore k k factor	Peso Weight gr
ROY	½"	45	66	30°, 60°, 90°, 120°, 150°, 180°	17 - 103	100

## Specifiche – Specifications

Pressione di lavoro: 3 - 8 bar	Working pressure: 3 - 8 bar
Corpo: bronzo	Body: bronze
Fattore k (SI): $k = \frac{Q}{\sqrt{P}}$ ; Q – portata (l/min); P – pressione (bar)	k factor (SI): $k = \frac{Q}{\sqrt{P}}$ ; Q – flow rate (l/min); P – pressure (bar)

## A richiesta – Optional

Corpo: acciaio inox AISI 304 o AISI 316	Body: Stainless steel AISI 304 or AISI 316
Angolo di spruzzo diverso	Different spray angles
Portate diverse	Different flow rates

## Certificazioni - Certifications

